

# Perkins South Shopping Center

## 1919 Staring Lane, Baton Rouge, LA 70810

Listing ID: 30047812  
 Status: Active  
 Property Type: Shopping Center For Lease  
 Retail Type: Community Center, Grocery-Anchored  
 Contiguous Space: 800 - 3,285 SF  
 Total Available: 8,620 SF  
 Lease Rate: \$13 - 14 PSF (Annual)  
 Base Monthly Rent: \$933.33 - 3,558  
 Lease Type: NNN



### Overview/Comments

Formerly Town South Shopping Center and rebranded as Perkins South Shopping Center. Property is currently undergoing \$1MM+ in renovations and upgrades including new parking lot, landscaping, lighting, aesthetics, and signage. Centrally located in Baton Rouge with easy access from I-10 via Essen Lane and Perkins Road. 30,000 cars per day on Perkins Road and more than 40,000 cars per day on Essen Lane.

Suite sizes available from 8,000 up to 40,550 SF.

### More Information Online

<https://www.lacdb.com//listing/30047812>

### QR Code

Scan this image with your mobile device:



### General Information

Tax ID/APN: 702714  
 Retail Type: Community Center, Grocery-Anchored, Neighborhood Center, Strip Center

### Available Space

Suite/Unit Number:	1927A	Space Type:	Relet
Space Available:	800 SF	Date Available:	10/11/2019
Minimum Divisible:	800 SF	Lease Rate:	\$14 PSF (Annual)
Maximum Contiguous:	800 SF	Lease Type:	NNN

### Available Space

Suite/Unit Number:	1927A-1941	Space Type:	Relet
Space Available:	3,285 SF	Date Available:	01/01/2020
Minimum Divisible:	3,285 SF	Lease Rate:	\$13 PSF (Annual)
Maximum Contiguous:	3,285 SF	Lease Type:	NNN

### Available Space

Suite/Unit Number:	8	Space Type:	Relet
Space Available:	2,050 SF	Date Available:	10/11/2019
Minimum Divisible:	2,050 SF	Lease Rate:	\$14 PSF (Annual)
Maximum Contiguous:	2,050 SF	Lease Type:	NNN

### Available Space

Suite/Unit Number:	1941	Maximum Contiguous:	2,485 SF
Space Available:	2,485 SF	Space Type:	Relet
Minimum Divisible:	2,485 SF	Date Available:	01/01/2020

Lease Rate: \$14 PSF (Annual)  
Lease Type: NNN

**Building Related**

Passenger Elevators: 0  
Freight Elevators: 0

**Location**

Address: 1919 Staring Lane, Baton Rouge, LA 70810  
County: East Baton Rouge  
MSA: Baton Rouge



**Property Images**



logos



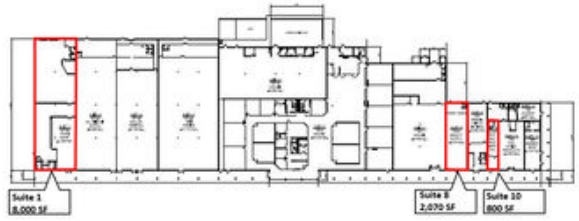
cKpwt2TA



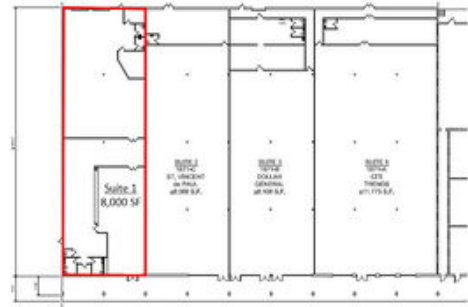
med district



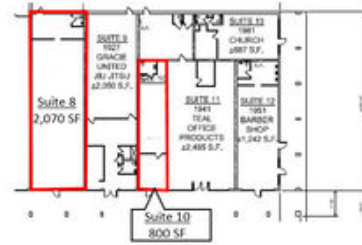
i3j881vw



Site Plan



Suite 1-Floor Plan



Floor Plan Suites 8 & 10

## Property Contacts

### Alex B Knight

Jarreau Real Estate, LLC  
 225-753-3573 [O]  
 alex@gojre.com



### Andrew D'Ostilio

NAI/Latter & Blum Commercial Baton Rouge  
 225-678-8851 [M]  
 andrewdos@latterblum.com